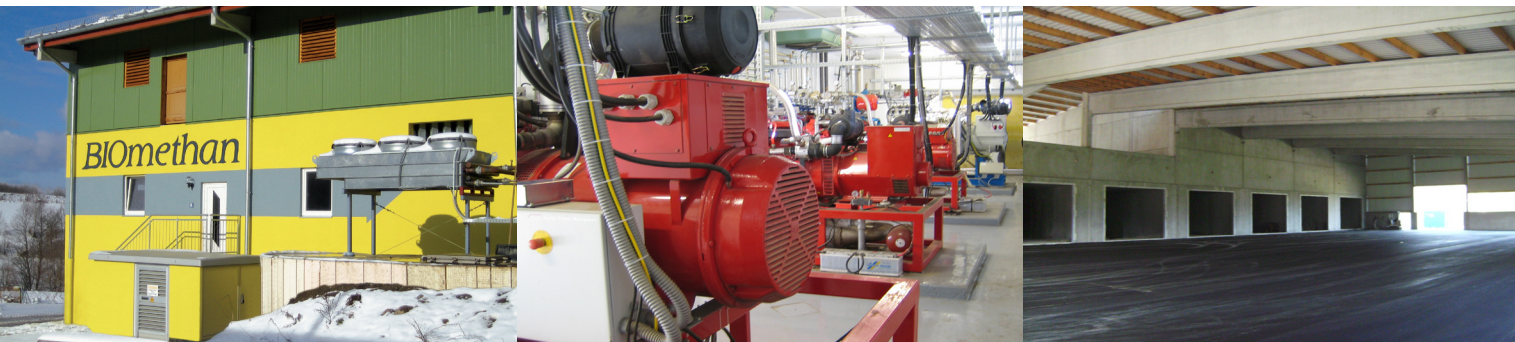


# Dry Anaerobic Digestion Plant Moosdorf

Plant Type: BIOFerm Dry AD, 610 kW<sub>el</sub>

BIOFerm GmbH  
Bayernwerk 8  
92421 Schwandorf  
Germany  
Telefon +49 9431 751-0  
Telefax +49 9431 751-204  
[www.bioferm-energy.com](http://www.bioferm-energy.com)



References

Biogas plant to feed into the electrical grid and the local district heating network.

## ■ Project data:

Owner and operator:	Biomethan GmbH, Moosdorf, Germany
Plant engineering:	BIOFerm GmbH, Schwandorf, Germany
Location:	93449 Waldmuenchen, Moosdorf 20, Germany
Start of operation:	December 2007

## ■ Energy balance:

Feed-in capacity/a:	Approx. 4.8 million kWh/a electric and 5.4 million kWh/a thermal output; potential electric power requirement for approx. 1.250* households* as well as heat supply for approx. 310 households*. <small>*3-person household in Germany with 120m<sup>2</sup> living area incl. hot water generation.</small>
Energy efficiency:	High energy efficiency (approx. 85% efficiency) through the utilisation of heat in the local district heating network and electricity (feed-in the grid) all year round.

## ■ Input material:

Municipal organic waste and material from landscape conservation.

## ■ Plant data:

Quantity	Plant component	Dimension/Capacity
1	Tipping bunker	200m <sup>3</sup>
1	Mixing area	1.740m <sup>2</sup>
7	Digesters	30 x 7 x 4 m
1	Percolate tank	70 m <sup>3</sup>
3	CHP (1 x 360, 1 x 150, 1 x 100 kW <sub>el</sub> )	total 610 kW <sub>el</sub>
1	Biofilter	20.000m <sup>3</sup> /h
1	End storage	
1	Control room/meeting room	